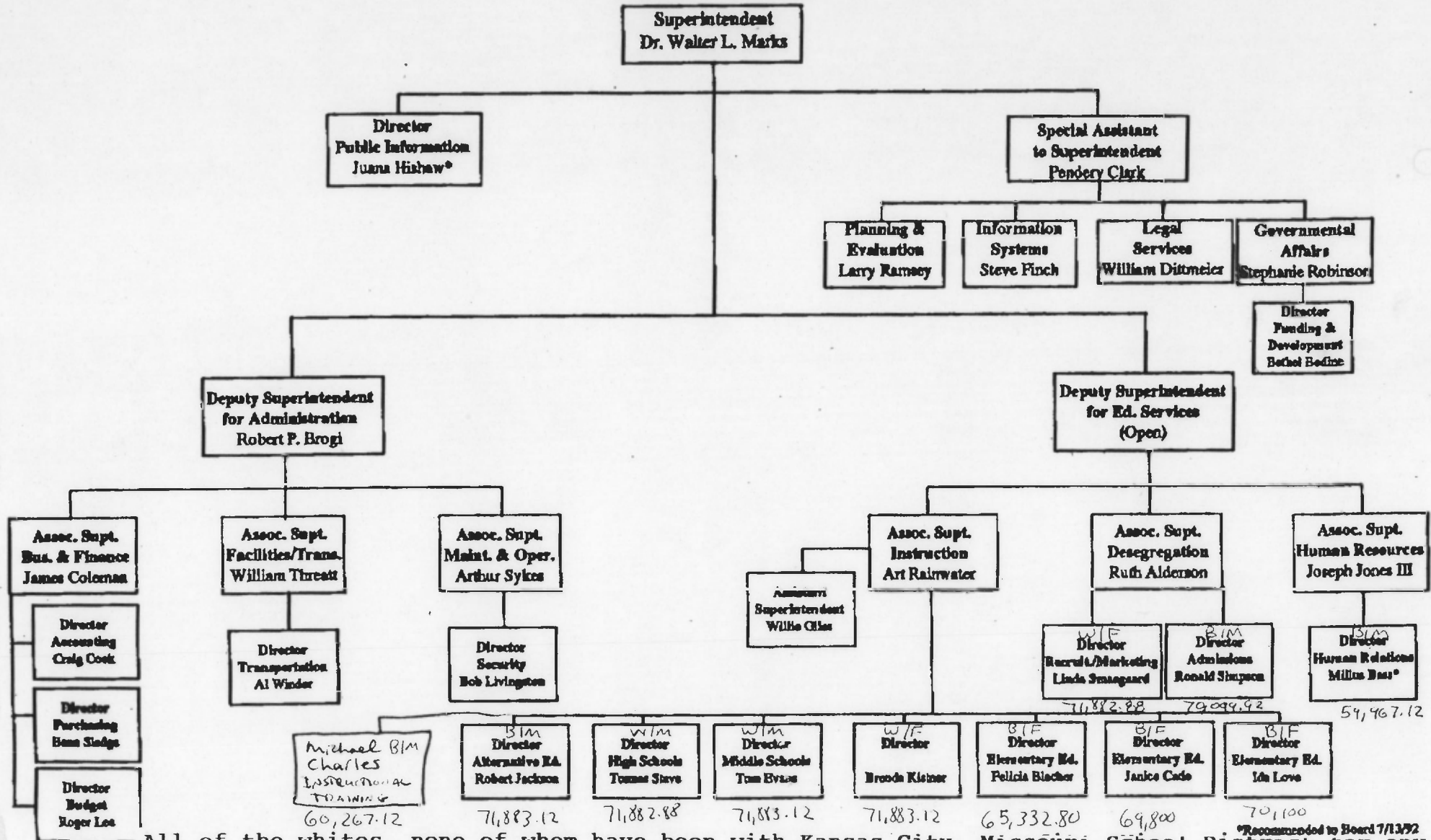


This chart clearly establishes that Dr. Walter Marks is unfair and discriminatory toward his African-American Director level employees. (See bottom of the Chart)

Kansas City, Missouri School District Organizational Chart



All of the whites, none of whom have been with Kansas City, Missouri School District for any substantial period of time and don't have any doctorates are at the top of the salary schedule and earn more than their Black colleagues. Only one (1) African-American is at the top. Why whites with less time in our district and less education earn more than African-Americans?